

# Liquidation + 5 Auctions

# 4

**Complete Paper Lines**

- (2) 95" Width
- 106.5" Width
- 75" Width

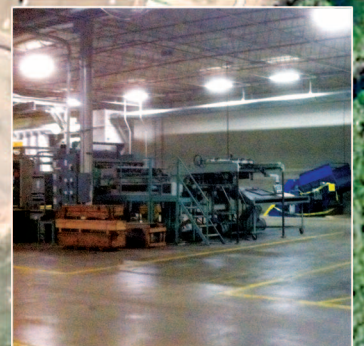
# Wausau Paper Mill

**Pulp & Paper Equipment • Industrial Property**

**BROKAW, WISCONSIN**

**Rail Lines**

**WISCONSIN RIVER**



**EVERYTHING IS FOR IMMEDIATE SALE**

**At Least 5 Auctions in Jan. & Feb., 2013**

- Auction #1 - **Machine Shop Equipment**
- Auction #2 - **Material Handling Equipment**
- Auction #3 - **Bearings**
- Auction #4 - **Motors & Gear Boxes**
- Auction #5 - **Electronics & Controls**

- 4 Complete Paper Lines, Converting & Stock Prep.
- Huge Quantity Support Equipment, Bearings, Motors, Material Handling
- Extensive Electrical & Wastewater
- Industrial Property, Warehouse & Office



For additional information  
call Eric Spirtas for Equipment **314-780-3742**  
Don Jacobsmeyer for Real Estate **314-503-7995**  
**Niagaraworldwide.com**

# Wausau Paper Mill Equipment Overview

## BROKAW, WISCONSIN

### 4 Complete Paper Lines

#### PAPER MACHINE #1

- Max Good Trim Width:  
110#/3300ft2 = 95"  
110#/3300ft2 = 96.5"
- Max Speed: 1,450
- Head Box Date: 1950's
- Roll Diameters: 19" - 20"
- Stock Preparation: Centralized

#### PAPER MACHINE #2

- Max Good Trim Width:  
80#/3300ft2 = 106.5"  
80#/3300ft2 = 108"
- Max Speed: 1,750
- Head Box Date: 1961's
- Roll Diameters: 23" - 24"
- Stock Preparation: Centralized

#### PAPER MACHINE #3

- Max Good Trim Width:  
60#/3300ft2 = 95"  
60#/3300ft2 = 96.5"
- Max Speed: 2,000
- Head Box Date: 1970's
- Roll Diameters: 21" - 22"
- Stock Preparation: Centralized

#### PAPER MACHINE #4

- Max Good Trim Width:  
119#/3300ft2 = 75"  
119#/3300ft2 = 80"
- Max Speed: 605
- Head Box Date: Unknown
- Roll Diameters: 16" - 17.5"
- Stock Preparation: Centralized

### Converting Equipment

#### ECH WILL FOLIO SHEETER - SKID

- Max Roll Width: 62"
- Base Weight Run: 50lb to 186lb

#### ECH WILL FOLIO SHEETER - CARTONS

- Working Max Width: 85"
- Roll Max Width: 88"
- Max Mechanical Speed: 300 m/min,  
998 f/min

#### WILL SHEETER #1

- Max Roll Width: 52"
- Size Produced: 8.5" x 11"

#### WILL SHEETER #2

- Max Roll Width: 61"
- Size Produced: 8.5" x 11", 8.5" x 14",  
9" x 11", 11" x 17"

#### WILL SHEETER #5

- Max Roll Width: 60"
- Size Produced: 8.5" x 11"

#### REWINDER #2

- Max Roll Width: 70"

#### REWINDER #3

- Max Roll Width: 58"

#### ROLL WRAP

- Poly Stretch Film
- Max Roll Width: 83"

#### SKID TURNER

- Max Size: 60" Platform

#### SKID WRAP

- Max Width: 48"
- Max Length: 80"
- Max Height: 80"

### Mill Air Systems

(4) Quincy : 1,000 CFM/200 HP  
I/R: 500 CFM/115 HP

Quincy: 1,500 CFM/300 HP

Air Dryer 1 & 2: 1,000 CFM

Air Dryer 3: 1,000 CFM

Air Dryer M-10: 1,500 CFM

Air Dryer F-6: 1,500 CFM

### Water Systems

#### RIVER WATER SYSTEM

- Building 7 & Bar Screen:  
12MGD/6MGD
- 5 Raw Water Pumps: 2,000GPM Each

#### FILTER WATER SYSTEM

- Building 45
- Clarifier: 9MGD/6MGD
- Filters: 9MGD/6MGD
- Clear Well: 14MGD/6MGD
- Filter Water Pumps: 14MGD/6MGD
- Traveling Screen: 14MGD/6MGD

### Steam & Feed Water

- (3) 1993 Anderson Demin Softening Systems
- (2) 1993 Anderson Condensate Polishers
- 1994 Sterling DA Tank
- (3) 1993 I/R Feed Water Pumps
- 1993 Anderson Regen System
- Steam System w/300#-150# Reducing Valves

### Boilers

- 1993 Foster Wheller: 250K#/HR,  
230K#/HR, 72546HP
- 1974 Erie City: 115K#/HR, 100K#/HR,  
3333HP
- 1966 Wicks: 120K#/HR, 100K#/HR,  
3478HP
- 1960 B&W: 50K#/HR, 30K#/HR,  
1449HP

### Electrical Distribution

- GE, ABB, Hevi Duty, Westinghouse Transformers & Substations

### Extensive selection of Support, Systems & Parts-5 Auctions in Jan. & Feb., 2013

#### AUCTION #1

#### Machine Shop Equipment

#### AUCTION #2

#### Material Handling Equipment

#### AUCTION #3

#### Bearings

#### AUCTION #4

#### Motors & Gear Boxes

#### AUCTION #5

#### Electronics & Controls

**For additional equipment information call Eric Spirtas**

**314-780-3742**

**For auction information call Burdette Wilber 314-616-8422**

**Niagaraworldwide.com**

# Wausau Paper Plant Industrial Property

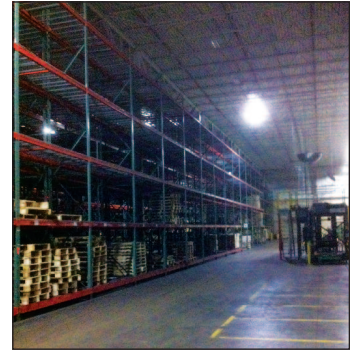
202 2nd Street, Brokaw, Wisconsin 54417



## MAIN WAREHOUSE/OFFICE BUILDINGS

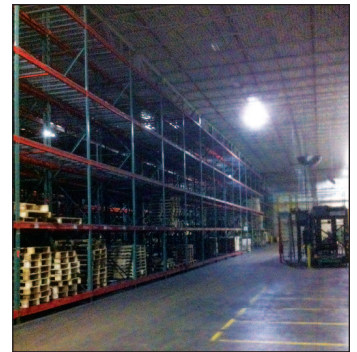
20,000 sf. Building #1

- Size: 90' x 220'
- Ceiling Height: 20'
- Loading Docks: Available
- Overhead Doors: Available



35,000 sf. Building #2

- Size: 135' x 250'
- Ceiling Height: 20'
- Loading Docks: 15' x 8'
- Overhead Doors: 15



## WAUSAU PAPER PLANT-BROKAW, WI



64,416 sf. Building #3

- Size: 220' x 310'
- Ceiling Height: 35'
- Loading Docks: Available
- Overhead Doors: Available

*All buildings have electrical up to 115KV, gas, water, waste water treatment plant, security fence, lay down area, ample parking area, office space and additional property for additions.*

**For additional property information call Don Jacobsmeyer 314-503-7995**

Niagara Worldwide is headquartered in Niagara, Wisconsin and with executive offices located in St Louis, Missouri and Manalapan, New Jersey, Niagara Worldwide is a nationally recognized, innovative firm.

- Facility Operations and Manufacturing
- Property Re-Development/Structure Reuse
- Asset Liquidation and Private Sales
- Equipment Acquisition
- Construction Services; Engineering, Construction, Demolition, Remediation, Rigging, Installation
- Security Installation and Enhancement
- Utility Procurement and Distribution



**For additional information call**

**Eric Spirtas for Equipment  
or plant details 314-780-3742**

**Don Jacobsmeyer for Real Estate  
314-503-7995**

**Niagaraworldwide.com**